

**2016  
TALA  
Professional  
Awards  
Compilation**

**Living  
Urbanism.**



# “Living Urbanism”

The notion of “**LANDSCAPE**” in society is going through a dynamic shift with the practice of landscape design reaching new boundaries in terms of approach, methodology, and ideology. No longer seen merely as a superficial layer of decoration, landscape design and its systems are being recognized as a performative apparatus to create or coexist with a spectrum of living systems. the eco-system, micro-socioeconomic structure, community, sub-cultures, infrastructure, political spaces, urban activities and overall sense of connectivity.

The outcomes resulting from these emerging approaches will challenge our profession and industry to formulate new criteria that will shape more livable cities and environments.

How we should respond to and implement this within our everyday practice will therefore undoubtedly come forth as a necessary issue for us to confront and consider as the profession evolves.

Message from the President  
04

Message from TALA night's Chairman  
05

Hospitality 76

Institution 88

Profiles of the Award Participants 06

The Urban Map of the Award Participant 08

Public Space  
96

Master Planning  
104

Living Urbanism Sketch 10

Jury Panal 16

The Professional Awards 2016 : Primary Selection Criteria for All Types of Project 18

Award Categories 21

Private Residence 30

Landscape Art / Exhibition  
110

Residential Complex: Low-Rise 42

Residential Complex: High-Rise 50

Community Service / Workshop 124

Conservation 134

Commercial 64

Additional Entries 136

# Contents

# Message from TALA President 2016



**Vipakorn  
Thumwimol,  
Ph.D.**

“Mens sana in corpore sano” - a sound mind in a sound body. This Latin phrase is widely used in sporting and educational contexts to express the theory that physical exercise is an important or essential part of mental and psychological well-being.

As to behavior nowadays, we live in a revved-up society that our parents could not have imagined. In our urban crowded lives, everything is done at double speed and driven intensity. We are detached from the wholesome reality of the green environment and nature. We consume increasingly more energy and resources.

At present and in the future, there are many huge projects which must be undergone to alter city life. We hope for the good news that citizens will find more opportunities for healthful outdoor exercise and recreation, for group activities and a fulfilling communal life. Furthermore, just as mental well-being is derived from rational order and behavior, in the world of globalization, every developmental step affects others. With the next step, we must not forget the last. Such a city that we envision will not ignore but rather be integrated with nature as it invites her to come back into its confines.

Over the past year, many projects were designed by landscape architects, but what does landscape planning and design have to do with the state of one's health? Can we bring about better conditions of life for all? What exactly can this profession do for our future?

During the year 2016, a program under the theme of The Living Urbanism was launched by TALA. With the selection of the TALA Professional Awards winners from more than eighty submitted projects, followed by the TALA Workshop organized in cooperation with students and professors of five universities as well as four great and professional landscape architect firms during the month of August, the program will culminate with the TALA Awards Night, held at the Bangkok Art and Culture Centre (BACC) on September 3, 2016.

I would like to take this opportunity to thank all our TALA members, committees and advisors, everyone involved in the events and activities mentioned and also our supporters. Finally, I would like to thank the members of our landscape architecture profession who, through the vitality of their actions and creations, allow for people to live happily, both physically and mentally, in both rural and urban environments.

# Message from TALA Night's Chairman



**Chairatana  
Surajaras**

Living Urbanism. Cities are expanding. A growing percentage of the population is moving into urban areas while our green spaces continue to decline in number. Urban dwellers' demands for recreational and public spaces are increasing and therefore finding a way to live life in a city happily and efficiently has been included in this contemporary discussion.

The role of landscape architects has become more influential with their knowledge and expertise that allows for the development of built structures and urban conditions to take place along-side and within a suitable environment. This encompasses the preservation of green spaces ensuring that they may coexist with the construction of new structures, creation of new green areas in emerging projects as well as facilitation of an understanding of the sustainable use of green spaces amongst the general public. Today's landscape architecture upholds not only its aesthetic contributions but also gives consideration to the environment and surrounding context of a space, which goes hand in hand with design and development.

This year's TALA Awards welcomed many quality and incredible landscape architecture projects. Nevertheless, the eminent judging panel shortlisted only the works that were highly interesting and able to respond to all of the selection criteria while the Honor Awards were given to the most outstanding projects in different categories. Every selected project will be promoted in order to garner wider recognition from the public as the TALA Awards hopes to support and encourage Thai landscape architects to continue their great and respectable work.

# Profiles of the award participants

## 1819

W. 1819studio.com  
E. info1819@gmail.com  
T. 02-615-7768  
F. 02-6157769

## AXIS LANDSCAPE

W. axlthailand.com  
E. contact@axlthailand.com  
T. 02-937-3815-6  
F. 02-937-3820

## INTEGRATED FIELD

W. integratedfield.com  
E. if@integratedfield.com  
T. 02-291-3439

## IXORA DESIGN

W. ixoradesign.com  
E. ixora@ixoradesign.com  
T. 02-512-3280-1

## KV ART&DESIGN

W. kvartdesign.com  
E. kvdesigncompany@gmail.com  
T. 02-9423838

## LANDPROCESS

E. landprocess@landprocess.co.th  
T. 02-641-8483

## LANDSCAPE ARCHITECTS 49

W. 49group.com  
E. predapond@l49.co.th  
arrak@l49.co.th  
apaporn@L49.co.th  
T. 02-661-4947  
02-661-2618  
02-260-3574  
F. 02-261-1422

## LANDSCAPE ARCHITECTS OF BANGKOK

W. landscapbangkok.com  
E. info@landscapbangkok.com  
T. 02-248-1142-3  
F. 02-642-6857

## LANDSCAPE TECTONIX

E. info@landscapetectonix.com  
T. 02-449-0035-6  
F. 02-449-0037

## LOKOH=

E. lokoh\_lokoh@yahoo.com  
T. 02-932-0810 , 02-640-1619  
F. 02-640-1619

## ON GROUND

W. onground.asia  
E. info@onground.asia  
T. 02-637-7668  
F. 02-6377855

## OPENBOX ARCHITECTS

W. openbox.co.th  
E. openbox@openbox.in.th  
admin@openbox.in.th  
T. 02-688-8844-5

## P LANDSCAPE

W. plandscape.com  
E. info@plandscape.com  
T. 02-261-3700-9  
F. 02-258-3588

## PLANNING WORKPLACE

E. pwplandscape@gmail.com  
T. 02-938-9536  
F. 02-938-9537

## RAFA DESIGN OFFICE

W. rafa.co.th  
E. rafa@rafadesign.com  
T. 02-661-8130-1  
F. 02-661-8132

## REDLAND-SCAPE

W. redland-scape.com  
E. nipaporn@redland-scape.com  
pasongjit@redland-scape.com  
info@redland-scape.com  
T. 02-158-1212-3  
F. 02-158-1214

## SANITAS STUDIO

W. sanitasstudio.wordpress.com  
E. sanitas@sanitasstudio.com  
T. 02-279-1118

## SHMA

W. shmadesigns.com  
E. namchai@shmadesigns.com  
yossapon@shmadesigns.com  
prapan@shmadesigns.com  
admin@shmadesigns.com  
T. 02-3901977  
F. 02-3901974

## SHMASOEN

E. admin@shmasoen.com  
T. 02-390-1977  
F. 02-390-1974

## STUDIO TAILA

W. studiotaila.com  
E. exeed@studiotaila.com  
T. 02-967-7071  
F. 02-967-7072

## TROP : TERRAINS + OPEN SPACE

E. tropdesign@gmail.com  
T. 02-932-4848  
F. 02-956-1526

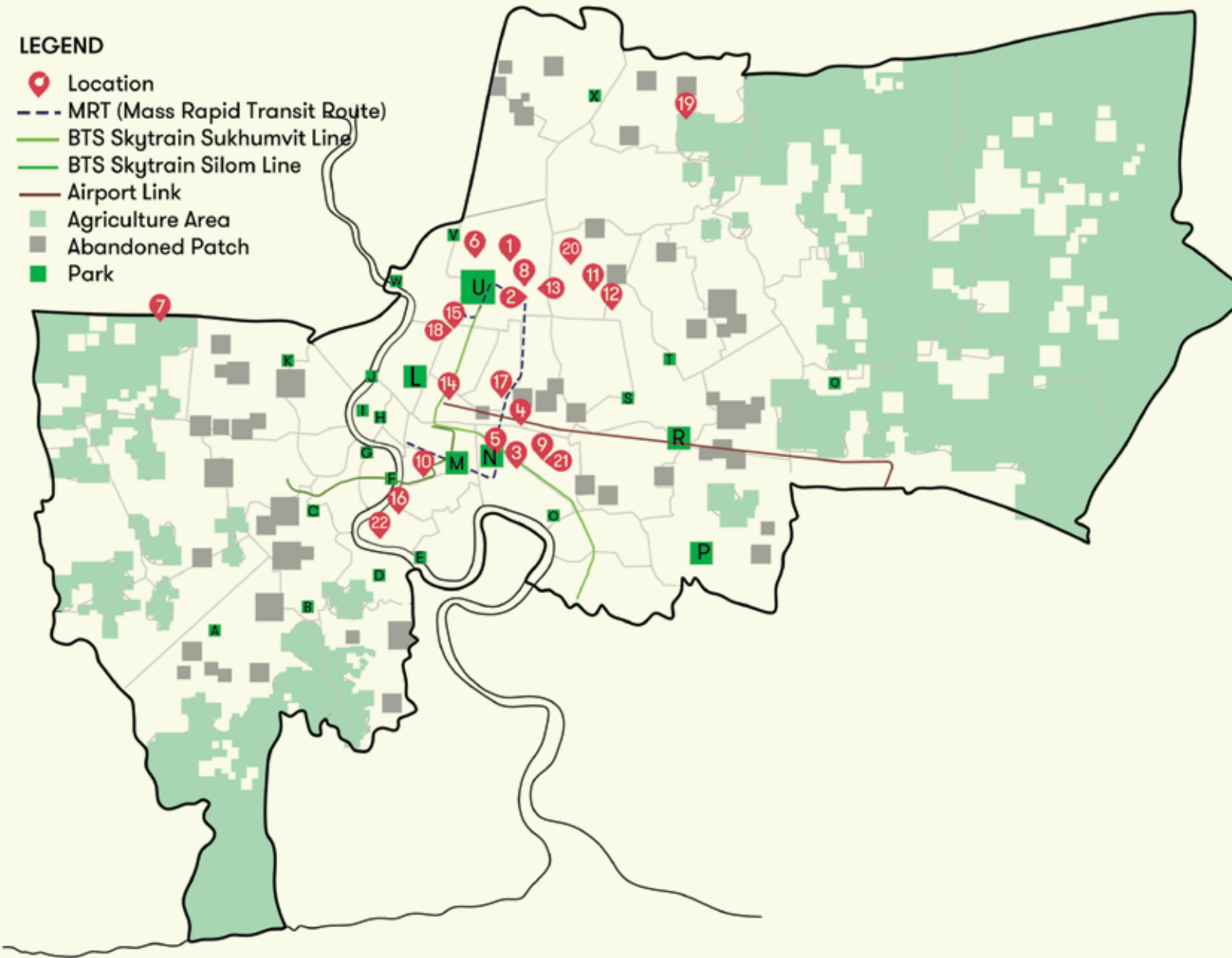
## XSITE DESIGN STUDIO

E. xsite\_dstudio@yahoo.com  
xsite\_dstudio@hotmail.com  
T. 02-158-7399  
F. 02-998-2063

# The Urban Map of The Award Participants

## LEGEND

- Location
- MRT (Mass Rapid Transit Route)
- BTS Skytrain Sukhumvit Line
- BTS Skytrain Silom Line
- Airport Link
- Agriculture Area
- Abandoned Patch
- Park



1. Axis Landscape
2. Ixora Design
3. Landscape Architects 49
4. P Landscape
5. RAFA Design Office
6. Redland-scape
7. Landscape Tectonix
8. Planning Workplace
9. Shma
10. ON GROUND



11. Trop : terrains + open space

12. LOKOH=

13. Studio Taila

14. Landscape Architects of Bangkok

15. Sanitas Studio

16. Openbox Architects

17. Landprocess

18. 1819

19. XSITE Design Studio

20. KV Art&Design

21. ShmaSoEn

22. Integrated Field



## PARK

- A. SOMDET YA PARK
- B. THON BURI PIROM PARK
- C. SUWANNANON PARK
- D. CHALOEM PHRA KIAT PARK
- E. PHRARAM 9 BRIDGE PARK
- F. CHALOEM PHRAHIAT FPREST PARK
- G. BANGKOK CHALOEM PHRAKIAT FOREST PARK
- H. ROMMANINAT PARK
- I. SARANROM PARK
- J. POM PHRA SUMEN
- K. WAN CHALOEM FOREST PAEK
- L. UMPORN PARK

- M. LUMPINI PARK
- N. BENJAKITI PARK
- O. SAI CHALOEM PHRAKIAT PARK
- P. SUANLUANG RAMA IX PARK
- Q. 60<sup>TH</sup> ANNIVERSARY QUEEN SIRIKIT PARK
- R. NAKKELA VILLAGE HEALTH PARK
- S. HUAMARK HEALTH PARK
- T. PRUEKSACHAT PARK
- U. WACHIRA BENCHATHAT PARK QUEEN SIRIKIT PARK CHATUCHUK PARK
- V. PRACHA NIVET FOREST PARK
- W. RAMA 7 BRIDGE PUBLIC PARK
- X. THAI AIR FORCE HEALTH PARK

# Living Urbanism Sketch



'Participatory, social and environment'  
Shma Soen



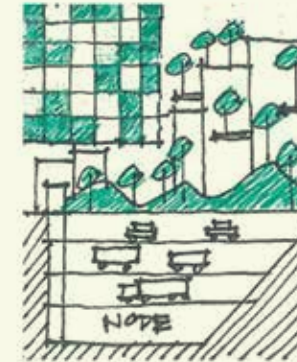
'Construction technology, sustainable, innovation and aesthetic'  
Shma



Living in nature and connecting all parts.  
**ONGROUND**



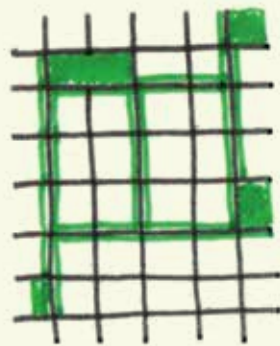
Urban | Confusion | Structure | Necessity | Creation | **Green** | Linkage | System | Enhancement | Walkability | Energy | Consumption | Living | Quality | Dependence | People | Government | Establishment | Collaboration | **Success**  
**IXORA**



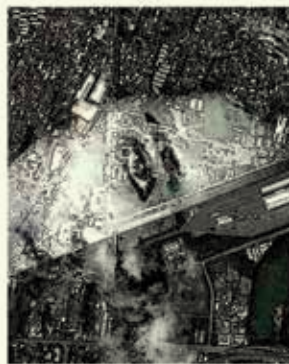
'Not Different'  
มนุษย์ไม่แปลกแยกจากสิ่งมีชีวิตปกติในธรรมชาติ  
**Planning Workplace**



'Life Relationship'  
City is created for human, but not only human lives in the city. Let's plant, let's make a change.  
**Integrated Field**



'ช่วยกันหายใจ' เชื่อมต่อพื้นที่สีเขียวของเมือง โดยการแทรกไปตามแนว GRID เพื่อคุณภาพชีวิตที่ดีขึ้น  
**TAILA**



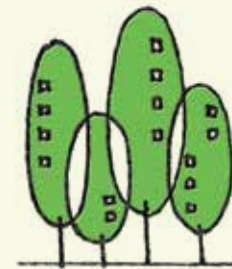
Landscape is a face of a man.  
We are what city is.  
**Landprocess**



Thrive to exist. reclaiming of nature in the city. Succession of wilderness occurs against decay of urban concrete. This ecological phenomena is seen across all living city dwellers through plants behavior, economic driven behavior, sub culture in the city.  
**Landscape Architects of Bangkok (LAB)**



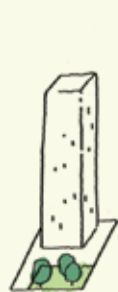
**NEEDED Landscape**  
**Architect 49 Limited**



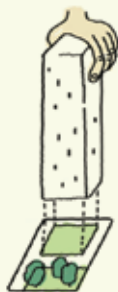
The tree city.  
Can we live with tree.  
**1819**



'MAN is not MAN-MADE'  
Although, urban formed by human, human is not man-made, urban is not man-made as well.  
**Integrated Field**



**Present Regulation**  
Building according to the regulations.  
**TROP**



**Lift** reducing building footprints, increasing open space.  
**TROP**



**Cohabited** of human and nature in the Urban Ecology created.  
**TROP**



'Illusion'  
If we choose, we can live in a world of comforting illusion... Noam Chomsky  
**Landscape Tectonix**



**LAND ES'CAPE**  
ภูมิสถาปัตยกรรมผังเมืองการปรับตัวของพื้นที่สีเขียวภายใต้ขอบเขตที่กำหนดในมหานคร  
**RAFA**



**Alone together**  
ต่างคนต่างอยู่ด้วยกัน  
**P Landscape**





# C.V. NATURAL STONE

DESIGN IN YOUR STYLE

## THE FIRST AND LEADER IN TECHNOLOGY OF ARTIFICIAL STONE PRODUCTS IN THAILAND

Our company introduces the most advanced design methods, technology and equipment for foreign artificial cultured stone, and organizes and produces and measures according to the high-quality artificial cultured stone products standard of the international market. Going into operation so far.

"THE HYBRID OF ALTERNATIVE NEW VISION AND IN-STLYE,  
DESIGNED BY NATURAL STONES."

Granite Mist Coat | Sand Stone | Stone Texture | Lava Stone  
Lime Stone | Mika Stone | Phupha Stone | Brick Veneer  
Bornite Stone | Castle Stone | Eldorado Stone

[www.nsstonetexture.co.th](http://www.nsstonetexture.co.th)  
Email: [cv.naturalstone1985@gmail.com](mailto:cv.naturalstone1985@gmail.com)  
02 - 893-8800-3

## FYI Center - For Your Inspiration Workplace

www.fyi-center.com

FYI Center - For Your Inspiration Workplace, A Creative and Inspiring Workplace at the Heart of the City that is a new hip project by Golden Land Property Development PLC, or Golden Land, Thailand's top real estate developer. The creative office building is under the concept "Business+Creativity", set to transform ordinary workspace into a place for inspirations and creativity. This new complex is built to provide innovative solutions to create a working environment where business creativity is the norm, fueling ideas for modern business people and creative minds.

Developed by



เอฟวายไอ เซ็นเตอร์ แหล่งสร้างสรรค์แรงบันดาลใจย่านกลางเมือง โครงการสุดฮิปแห่งล่าสุดของ บริษัท แผ่นดินทอง พร็อพเพอร์ตี้ ดีเวลลอปเม้นท์ หรือ โกลด์แลนด์ บริษัทพัฒนา อสังหาริมทรัพย์ชั้นนำของไทย เพื่อยกระดับอาคารสำนักงานสุดครีเอทีฟ ในคอนเซ็ปต์ "Business+Creativity" ที่จะเปลี่ยนความจำยอมสถานที่ทำงาน ให้กลายเป็นที่ที่สามารถถ่ายทอด ความสร้างสรรค์ โดยผสมผสานฟังก์ชันของสำนักงานกับพื้นที่สำหรับเติบโตดีเยี่ยมให้เหล่านักธุรกิจ รุ่นใหม่ได้อย่างลงตัว พร้อมตอบโจทย์กลุ่มคนกับงาน สร้างสรรค์ได้อย่างแท้จริง



## Earth Colors

Be a part of the arts

ปูสีผสมสำเร็จ Earth Crete Color คือซีเมนต์สี สูตรพรีเมียม High Strength Formula และ Inorganic Synthetic Pigment Colors ที่ช่วยให้ พื้นผิวหน้าแข็งแกร่งทนทาน มีสีสิ้นเข้มขึ้นสม่ำเสมอ ทนต่อแสงแดด (Light Fastness) ภูมิอากาศ (Climate Resistance) ไม่ซีดจางง่าย (UV Resistance) เหมาะสำหรับใช้ตกแต่งผิวหน้า งานสถาปัตยกรรม ที่ต้องการความสวยงามในรูปแบบงานผิวปูนสี ที่มีเอกลักษณ์ ไม่ว่าจะป็นภายใน ภายนอกอาคาร งานออกแบบภูมิทัศน์ สวนสาธารณะ ทางเดิน ลานจอดรถ สระน้ำ คอนกรีตหล่อขึ้นรูป ฯลฯ



บริษัท เอิร์ธ คัลเลอร์ส จำกัด  
187/72 ถนนบางขุนนนท์ แขวงบางขุนนนท์ เขตบางกอกน้อย กทม. 10700  
โทร. 02-8875388-9 แฟกซ์. 02-4334033  
email: earthcolors.co.th@gmail.com

Earth Colors Co., Ltd.  
187/72 Bangkhunnon Rd.,  
Bangkhunnon, Bangkoknoi,  
Bangkok 10700  
Tel. +662 887 5388-9  
Fax. +662 433 4033  
email: earthcolors.co.th@gmail.com



# 19th

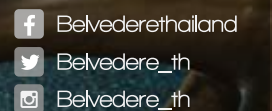
## LANDSCAPE



## Bel Vedere

Glass Mosaic & Ceramic Tile

82 Soi Saen Sabai,  
Rama 4 Road,  
Bangkok 10110



Belvederethailand

Belvedere\_th

Belvedere\_th

Tel +662-661-2411  
Fax: +662-262-1073  
info@belvedere.co.th  
www.belvedere.co.th

W Hotel Bangkok

# Jury Panal



## Pratarn Teeratada

After obtaining his B.A. in Political Science from Chulalongkorn University, Pratarn moved on to receive his MBA from the New York Institute of Technology. He is one of the founders of art4d and served as the magazine's Managing Editor from 1995 to 2014. In 2015, Pratarn took on the position of Editor-in-Chief of art4d magazine and also continues his role as the Director of the Bangkok Design Festival, an annual event that he initiated and has organized together with various design networks since 2007.



## Professor Khaisri Paksukcharern

Assistant Professor Khaisri Paksukcharern (Ph.D.) currently teaches in the Faculty of Architecture, Chulalongkorn University while also practicing as an architect at AP' STRACT Limited, Bangkok, Thailand. Khaisri received both her Bachelor and Master Degrees in Architecture, from Chulalongkorn University, Thailand in 1989 and the University of Washington, Seattle in 1993 respectively. Pursuing her research interests in architecture and urban morphology, Khaisri received a full scholarship from Chulalongkorn University to pursue her Ph.D. at the University College London, United Kingdom from 1998-2003 under the instruction of Bill Hillier, a renowned professor in advanced architectural studies

at the Bartlett School. Khaisri has since carried out and advised her graduate students on several research projects regarding urban public spaces in Thailand, while further co-establishing the Urban Design Development Center (UddC), the first institution of its kind in Thailand, that has acted as an academic and professional platform for urban regeneration projects in Bangkok since October of 2012. Khaisri has served as the Head of Department of Urban and Regional Planning from 2012-2016 and is now the Course Director of Urban Design at the undergraduate level.



## Dr. Pornthum Thumwimol

Dr. Pornthum Thumwimol (Ph.D.) is a landscape architect currently working with the Fine Arts Department, Ministry of Culture, Thailand while also serving as a regular guest lecturer at Chulalongkorn and Thammasat Universities. Pornthum received his B.L.A in Landscape Architecture from Chulalongkorn University in Bangkok prior to obtaining a Master's Degree in Architecture and Urban Planning from the Architecture School of Paris de la Villette, Paris, France in 1999. Pornthum then went on to complete a Pre-doctorate (DEA) in Philosophy of Landscape Architecture, from the Architecture School of Paris de la Villette, Paris, France in 1998 and a Doctorate in Architecture from the University of Paris VIII and the Research Institute for Architecture (IPRAUS: ), Paris in 2004. Pornthum has since engaged in a wide range of design and planning projects, as well as been involved in the establishment of cultural landscape studies in Thailand. Contributing as a writer and co-editor for several books and articles including The Cultural Landscape Management published by The National Culture Commission in 2005, Pornthum has also received numerous awards including the

Excellence and Honour Award from The Association of Siamese Architects (ASA) for the design of the Panumrungs Information Centre in 1992. Pornthum has also contributed as a guest speaker of several events including the SPAFA International Conference on Cultural Environment Conservation (2005), The ICOMOS International Conferences on Sustainable Local Heritage Conservation (2006), and the Thai Association of Landscape Architecture Symposium (2010).



## Chaya Panyasook

Chaya Panyasook graduated from the Landscape Architecture program, Faculty of Architecture, Chulalongkorn University in 1982 following which, from the period of 1986-1996, Chaya co-founded and served as the Managing Director of Group Three Design, a pioneering landscape architecture firm in Thailand. Moreover, he served as the president of the Thai Association of Landscape Architects from 2011-2013, and also contributed as a landscape architecture lecturer for several educational institutions and organizations in Thailand. Chaya's interests and areas of expertise are in landscape ecology and human settlement, as well as landscape architecture and preservation.



## Chamree Arayanimitskul

After receiving a Bachelor's Degree from the Faculty of Architecture, Chulalongkorn University in 1978, Chamree Arayanimitskul moved on to the University of Michigan, Ann Arbor where she obtained a Master's Degree in Landscape Architecture in 1981. Chamree served as Head of the Department of Landscape Architecture from 1990-1993,

and took on a number of major positions within the Faculty of Architecture, Chulalongkorn University, the Thai Association of Landscape Architects and the Landscape Architect Council of Thailand, while also contributing as a lecturer for both educational institutions and organizations. In 1995, Chamree was named the Chairman of the Organizing Committee of the International Federation of Landscape Architects, through which an event was held in Bangkok under the topic of Tourism Development and Landscape Changes. In 2009, the Alumni Association of Chulalongkorn University also selected Chamree as a notable alumnus of the Faculty of Architecture, Chulalongkorn University in 2009.



## Somchai Chariyacharoen

Somchai Chariyacharoen graduated from the Faculty of Political Science, Chulalongkorn University in 1985 and has served three terms as the mayor of Klaeng, Rayong Province from 2001 to 2013, greatly contributing to the development of the city, especially in terms of ecological preservation and sustainable development. Somchai has been the recipient of several domestic and international awards such as the ASA Architectural Conservation Award (from the Association of Siamese Architects Under Royal Patronage in 2012 and the National Earth Hour Capital Award in the program of Earth Hour City Challenge (EHCC) from the World Wildlife Fund (WWF) in 2011.



## Krisda Prasertsith

Krisda Prasertsith currently teaches in the Faculty of Architecture, Kasetsart University and has served as Head of the Landscape Architecture Department from 2007-2012. He graduated from the Faculty of Architecture, Kasetsart University with second-class honors prior to continuing his studies at the University of Toulouse (le Mirail), Toulouse, France, where he graduated with a Master's Degree in DEA Environment and Landscape in 2004. He has since engaged in a wide range of landscape architecture and urban planning projects as well as contributed to the academic sector by serving as a critic, guest lecturer, and competition judge for a variety of events.



## Phanupong Thampalert

Phanupong Thampalert received his Bachelor of Architecture from the Faculty of Architecture, Silpakorn University in 1993 and Master of Urban and Environmental Planning from the same institution in 2009. He has been working as an architect at Ajaphol Dusitnanond Architect & Associates Co. Ltd. since 1993 until present, and is currently an eminent member of the Committee of Federal Land Allocation, Ministry of Interior. Phanupong has also been the recipient of several professional awards due to his prominent role on the design teams of a great number of outstanding architectural creations including the winning designs of many governmental projects. Phanupong was further one of the Gold Medal winners of The Association of Siamese Architects Under Royal Patronage's Architectural Awards and The

Architects Regional Council Asia (ARCASIA), and is now teaching as a visiting professor for the Faculties of Architecture of several educational institutions.



## Sirichai Hongvittayakorn

Associate Professor Sirichai Hongvittayakorn graduated from the Faculty of Architecture, Chulalongkorn University in 1972 before receiving a scholarship to further his studies in Landscape Architecture at the University of Michigan in 1981. Appointed as the Dean of the Faculty of Architecture and Environmental Design, Maejo University (2006-2008), Associate Professor Sirichai is currently fulfilling the role of an academic with great expertise in landscape architecture. Apart from his position as a visiting professor for various universities, Sirichai is revered for the outstanding professional and continuous academic contributions he has made to the field of landscape architecture. In 2015, Associate Professor Sirichai was granted the Architect Award for Outstanding Achievement in Architectural Education on the special occasion of The Association of Siamese Architects Under Royal Patronage's 80<sup>th</sup> Anniversary.

# TALA Professional Awards 2016: Primary Selection Criteria for All Types of Projects

## 01 Functions

Suitably answer to the requirements and demands of the project's owner and users with a satisfying and standardized level of functional convenience and consideration for safety.

## 02 Aesthetics/ Creativity

High-quality floor plan/ design and construction that expresses creativity and a unique identity with an aesthetic value that creates a positive user experience.

## 03 Context/ Accessibility

Contextually derived and universal design with the ability to consider and integrate its relationship with the surrounding environment in order to have a positive impact on both its users and the area it is located in.

## 04 Sustainability

Employ a process, concept and construction method that contributes professional and academic value to the future development of the industry, while also introducing developmental approaches for the improvement of a city, community and society's image and standards.

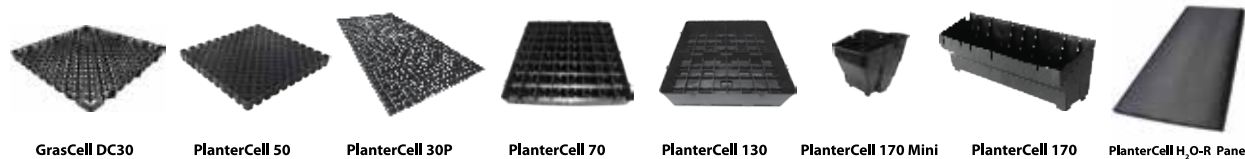
## 05 Professional/ Academic Values

Employ a process, concept and construction method that follows the principles of Sustainable Design while giving careful consideration to environmental responsibility as well as economic, social and ecological impacts.

## Green Wall / Green Roof



### Greenery Products



## TPO / EPDM Membranes



### Seaming



# Award Categories

\*\* All projects must be located in Thailand

## Private Residence

A private space within an individual residence such as a detached house or townhouse condominium (private apartment)

\*\* Construction of the project must be completed and the project must have been officially in operation for one year's time before submission.

## General Design

General Design projects are separated into the following categories:

### Residential Complex: Low-Rise

The public space of a residential complex such as a housing development, townhouse or condominium which does not exceed 23 meters in height.

### Residential Complex: High-Rise

The public space of a residential complex or condominium exceeding 23 meters in height.

### Commercial

Projects that focus on commerce such as malls, markets, stores, entertainment centers, etc.

### Hospitality

Projects that focus on service and accommodation for vacation and relaxation such as hotels, resorts, golf courses, amusement parks, water parks, etc.

### Institution

Projects dedicated to education and the dissemination of knowledge such as schools, research centers, offices, the governmental sector, religious institutions, museums, etc.

### Public Space

Projects that focus on providing areas for public benefit and aren't limited in use to a specific group of people such as streetscapes, urban plazas, community spaces, waterfronts, parks, sport and recreation facilities, etc.

\*\* The project must be finish constructed and officially operate before submission for 1 year) \*\*

## Master Planning

A long-term construction plan such as a master plan for universities, governmental and individual organizations, community plans, designs for large public spaces, and master plans developed in relation to reactivation of the environment.

\*\*Ongoing construction projects are permitted to be submitted within this category\*\*

## Landscape Art / Exhibition

Landscape Art, Earth Sculptures, Environmental Art, Installation Art / Media Art / Exhibitions, etc. that are related to landscape architecture.

\*\* Only completed constructions or works publicized before the submission date will be considered.

## Community Service / Workshop

Designs that focus on the process of including the participation of the community, coordination with stakeholders and placemaking that benefits the community's quality of life..

## Conservation Awards

(No submission cost) Evaluated by the landscape architectural conservation committee, the categories of conservation awards were broken down into two types:

### Heritage Conservation

Landscape architectural design that can conserve, restore and demonstrate significances of the sites in terms of human history, archaeology, local / traditional custom and natural diversity to general public.

### Heritage Creativity

Landscape architectural design that can apply and / or adapt traditional or local / indigenous knowledge and intellectual from both nature and culture to new design for present day circumstance

\* Noted:

1. The projects must not have been awarded in any edition of the TALA Awards previously.
2. Any projects that were submitted to previous editions of the TALA Awards but not awarded are invited to re-submit within this category.

# Excellent Awards

Private Residence

## Baan Khao Yai Landscape Architects 49

Location: Nakhon Ratchasima

Completion: 2015

Area: 2.5 Rai

Lead Designer: Arrak Ouiyamaphan

Landscape Architects: Tara Aungsumalee /  
Witsarut Ditpae

Architect: Architects 49 (House Design) Limited

Engineers: Architectural Engineering 49

Limited / M&E Engineering 49 Limited

Prime Contractor: Cordia

Photography Credit: Landscape Architects 49  
Limited / Krisada Boonchaleow



## Residential Complex: High-Rise **Ideo Morph 38**

### Shma

**Location:** Bangkok  
**Completion:** 2013  
**Area:** 4,900 Sq.m.  
**Design Director:** Yossapon Boonsom /  
Namchai Saensupha  
**Landscape Architect:** Kirin Tanglertpanya  
**Horticulturist:** Wimonporn Chaiyathet  
**Architect:** Woha Thailand Limited  
**M&E:** Plan Engineering Co., Ltd.  
**C&S Engineering:** PPL Engineerings Co., Ltd.  
**Client:** Ananda Development PCL.  
**Hardscape Contractor:** Westcon Co.,Ltd.  
**Softscape Contractor:** MJ Garden  
**Photography Credit:** Wison Tungthunya /  
Santana Petchsuk / Chaichoopol Vathakanon



### Commercial

## Walk of the Town : Groove @ Central World

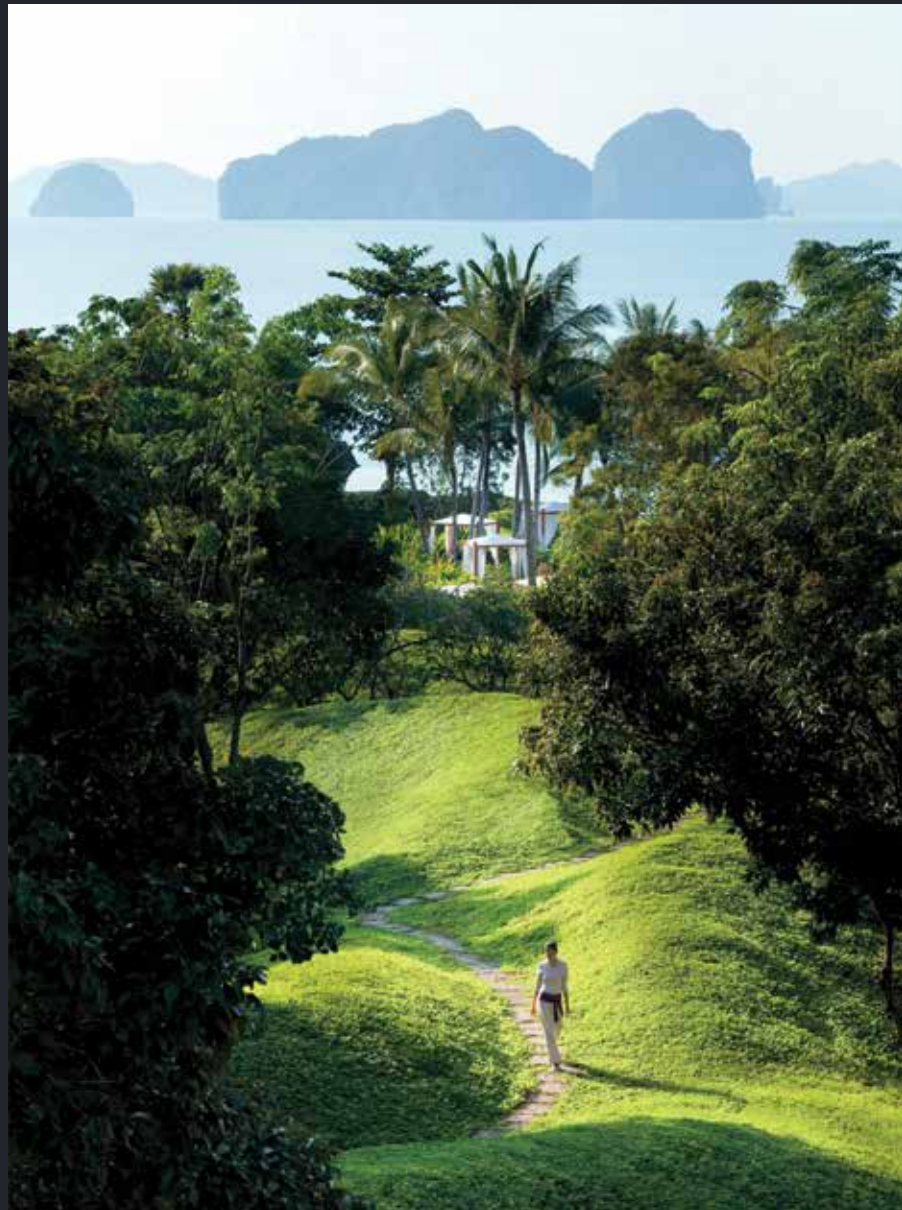
**TROP : terrains+open space**

**Location:** Bangkok  
**Completion:** 2014  
**Area:** 9,000 Sq.m.  
**Landscape Architects of Record:** Pok Kobkongsanti  
(Design Director) / Maytinee Nakprasert /  
Pattanee Ukam  
**Lead Architect:** Synthesis Design + Architecture  
Company  
**Architect:** Architects 49 Co., Ltd. (A49) Foundry of  
Space Co., Ltd.  
**Engineer:** K.C.S. Associates Co.,Ltd.  
**M&E Engineer:** Sum Utilities Management Co.,Ltd.

**Transportation Engineer:** S2R Consulting Co.,Ltd.  
**Project Management:** Qbic Engineering and  
Architect Co.,Ltd.  
**Client:** Central Pattana Public Company Limited  
**Contractor:** Construction Pros Co.,Ltd.  
**Landscape Contractor:** Allgreen Co., Ltd.  
**Lighting Designer:** Seam Design Company  
**Signage Designer:** Farmgroup Co.,Ltd.  
**Water Features:** Dong Co.,Ltd.  
**Planter Pots:** TM Progressive Co.,Ltd.  
**Photography Credit:** Spaceshift Studio /  
Pirak Anurakyawachon / Aranyarat Prathomrat

Hospitality  
**Phulay Bay,  
A Ritz-Carlton Reserve**  
P Landscape

Location: Krabi  
Completion: 2009  
Area: 100,800 Sq.m.  
Landscape Architects: Wannaporn  
Phornprapha / Pattarapan Rukkulchon /  
Hathai Rojanasripairot  
Lead Architect: Bunnag Architects, A49  
Client: Piya International Co.,Ltd.  
Photography Credit: Piya International Co.,Ltd.



Institution  
**SCG 100<sup>th</sup> Year  
Building**  
Landscape Architects of Bangkok

Location: Bangkok  
Completion: 2014  
Area: 15,650 Sq.m.  
Lead Designers: Tawatthai Kobkaikit /  
Touchapon Suntrajarn  
Landscape Architects: Nantawan Sirisup /  
Paponpat Chotipanpat / Konstantina Stara /  
Pitchaya Kittiwat / Pattanasart Ingkayakul  
Client: The Siam Cement PLC  
(SCG Thailand Co.,Ltd.)  
Contractor: Cordia Co.,Ltd.  
Photography Credit: Rungkit Charoenwat





Landscape Art / Exhibition

# The Metro- Forest Project

Landscape Architects of Bangkok

**Location:** Bangkok

**Completion:** 2015

**Area:** 19,485 Sq.m.

**Landscape Architect of Record:** Nantawan Sirisup

/ Akachai Weerasakulchai / Punyada Klinpaka /

Tiprada Tingklub / Thannaphat Tonnuwa

**Ecological Forest Consultant:** Dr. Sirin Kaewlaierd

**Landscape Design Consultant:** Assistant Professor

Dr. Angsana Boonyobhas

**Architectural Design & Interior Design:**

Spacetime Architects Co.,Ltd.

**Interior Design of Mini-Theatre area:**

designLAB NLSS Co.,Ltd.

**Energy & Green Building Consultant:**

Architects 49 Limited

**Exhibition Design:** Pico (Thailand) Public Co.,Ltd.

**Lighting Consultant:** 49 Lighting Design

Consultants Limited

**Structural Engineering:** H. Engineer Co.,Ltd.

**MEP Engineering:** MITR Technical Consultant Co.,Ltd.

**Quantity Surveyor:** Langdon & Seah Thailand Ltd.

**Construction Management:** EDA Consultant Co.,Ltd.

**Main Contractor:** Ritta Co.,Ltd.

**Softscape Contractor:** Cordia Co.,Ltd.

**Waterfall Contractor:** Tropical Garden Limited

Partnership

**Rammed Earth Sub-contractor:** La Terre Co.,Ltd.

**Earthwork Contractor:** Psatanachod Kanyotha Co.,Ltd.

**Client:** PTT Public Company Limited

**Prime Contractor:** Cordia Co.,Ltd.

**Photography Credit:** Rungkit Charoenwat



Community Service / Workshop

# Siam Green Sky : Urban Agricultural Learning Center

Landprocess

**Location:** Bangkok

**Completion:** 2014

**Area:** 1.16 Rai

**Client:** Property Management Office  
Chulalongkorn University

**Prime Contractor (if applicable):**

Powerline Engineering Public Company Limited

**Photography credit (if applicable):**

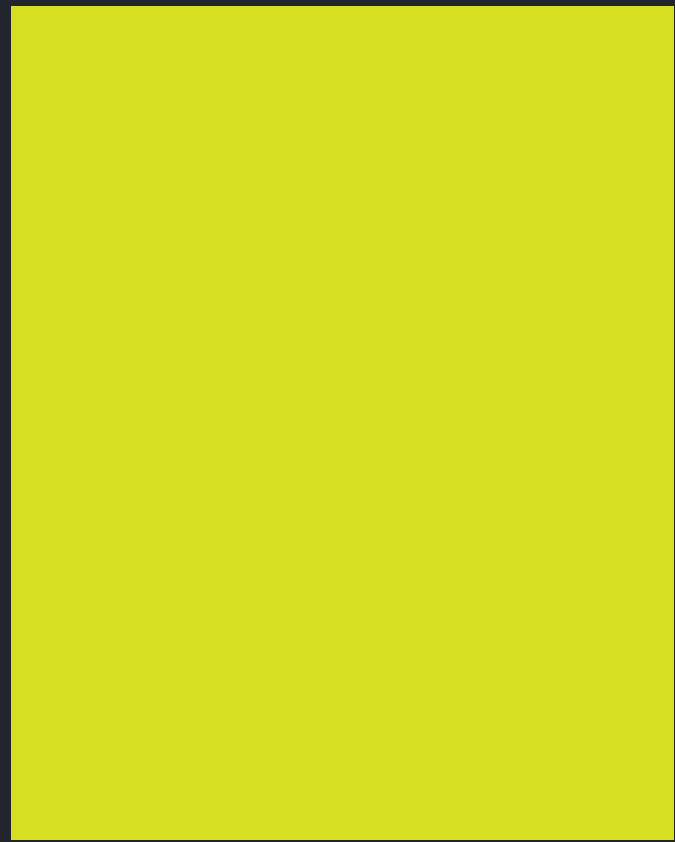
Kantharika Saetang

**Plant Materials Consultants:** Assist. Prof. Dr.  
Kanogwan Seraypheap / Assist. Prof. Dr. Jittra  
Piapukiew / Supawan Visetnoi

**Energy Saving Consultants:** Yutakarn Makpan

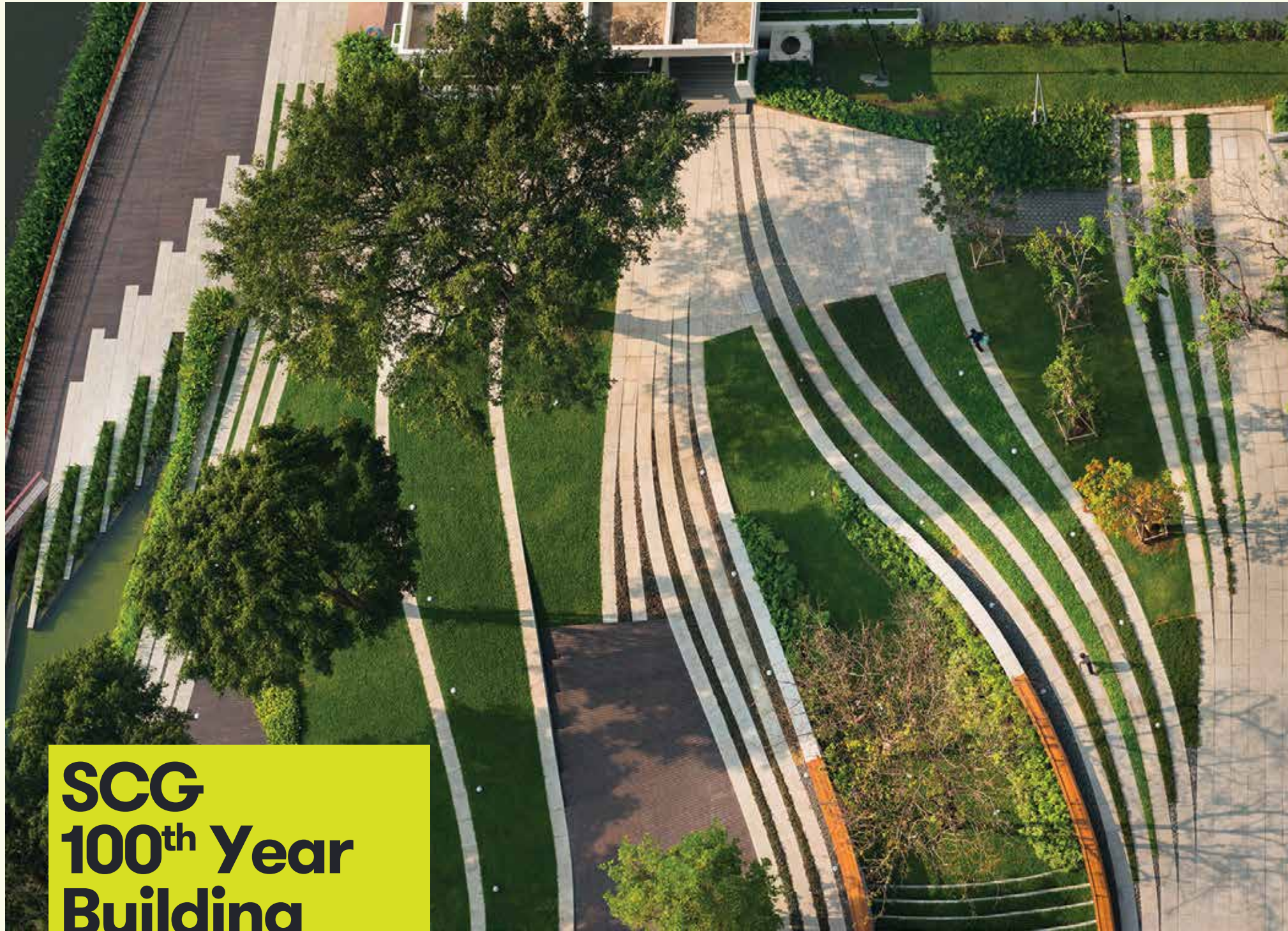
**Landscape Maintenance Consultant:**

Shukiat Koman



**Institution**

Excellent Award



# SCG 100<sup>th</sup> Year Building

Landscape Architects  
of Bangkok

Location  
**Bangkok**  
Completion  
**2014**  
Area  
**15,650 Sq.m.**

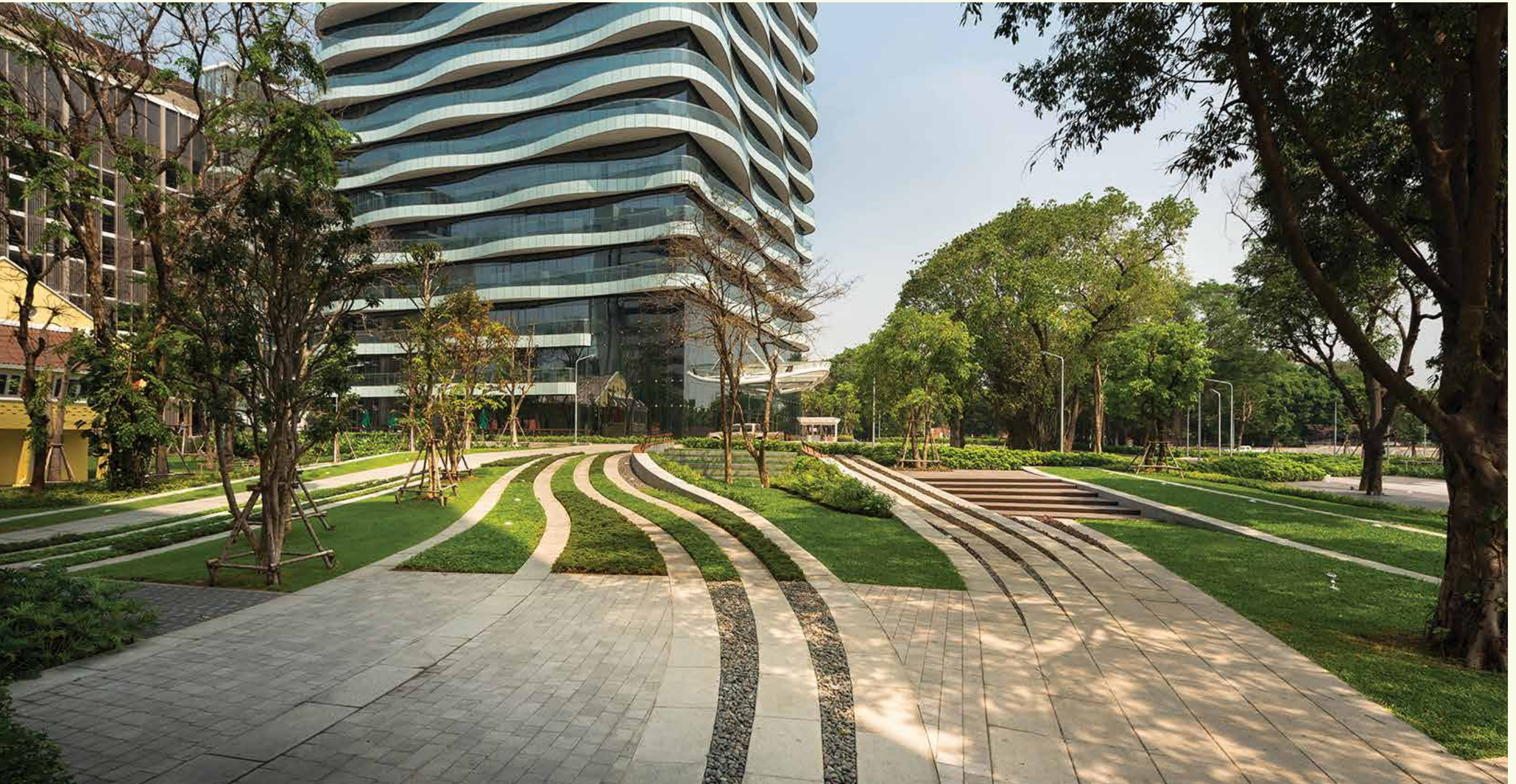


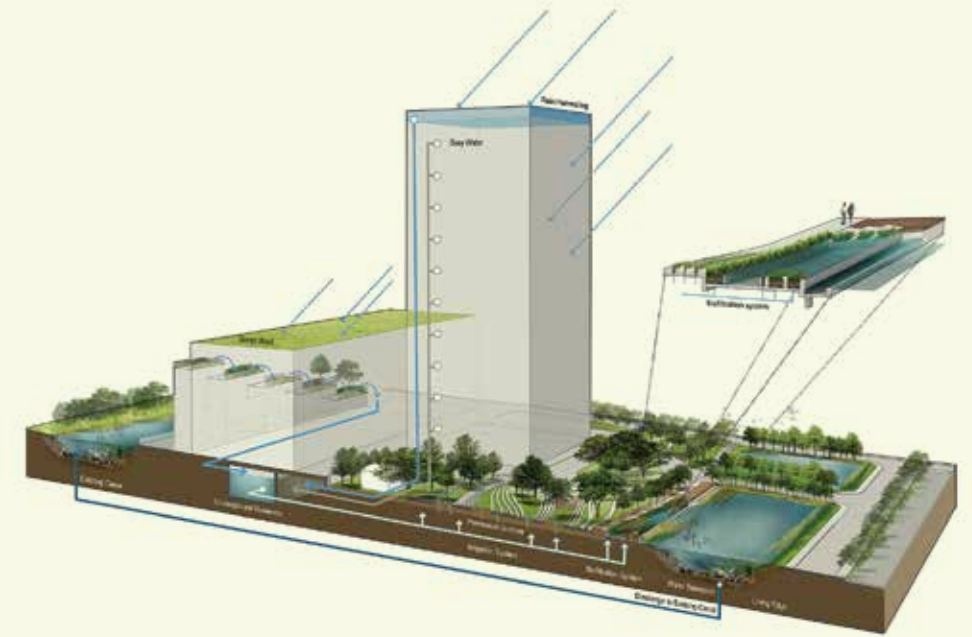
The SCG new head office design commemorates the 100<sup>th</sup> anniversary of one of Thailand's leaders in the construction and cement industry. A responsible, sustainable design approach was taken to celebrate the company's history by preserving the existing trees and using local materials provided by the cement company to create a flowing continuity to the new frontage of the campus site. The project demonstrates creativity and a unique design technique in the creation of the form from the historical, current, and potential function of the (15,650 square meter) project site. Through the curvature of continuous bands, niches are created to provide unique spaces for outdoor programs mixed with landscape elements for people to appreciate while also functioning as a sustainable water quality filtration system. The SCG landscape is a landmark design that shows a rich display of materials, textures, and forms in a relatively small, urban setting.

*"This project distinctively and effectively communicates the organization's identity with its showcasing of sustainable design through both the architec-*

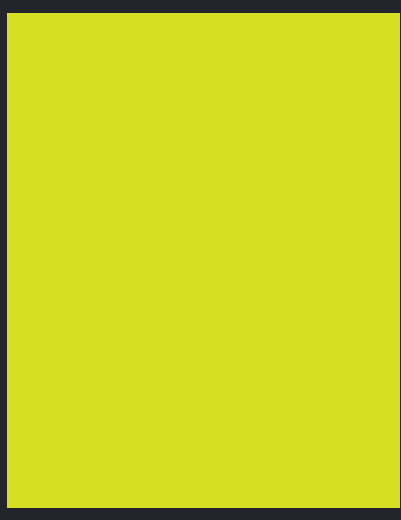
*ture and landscape architecture, be it water harvesting, the project's use of existing trees, or increase of urban green space."*  
2016 Awards jury

**Lead Designers:** Tawatchai Kobkaikit / Touchapon Suntrajarn  
**Landscape Architects:** Nantawan Sirisup / Paponpat Chotipanpat / Konstantina Stara / Pitchaya Kittiwat / Pattanasart Ingkayakul  
**Client:** The Siam Cement PLC (SCG Thailand Co.,Ltd.)  
**Contractor:** Cordia Co.,Ltd.  
**Photography Credit:** Rungkit Charoenwat





# Public Space



Honorable Award



Location  
**Lampang**  
 Completion  
**2014**  
 Area  
**12,844 Sq.m.**

*“The concept of “Change” is used to create meaning within the project. The public park that also serves as a water detention area highlights the importance of an effective water system alongside aesthetics and human needs. It embodies a simple design that successfully reflects the local characters while remaining low maintenance in character.”*  
 2016 Awards jury

# Happiness Center

Landscape Architects of Bangkok



PTT Lampang, “Happiness Center,” is an eco-community park located next to THE PTT Petroleum Depot. The intention of the project was to encourage a living harmony between the factory and the local community. This park acts as a place for a collection of native and rare plant varieties while also providing planting plots for local schools and re-forestation plots. In terms of water management practice, the park itself serves as a large water retention area, which helps to absorb excess overflow and runoff during instances of heavy rainfall. The grading design was coordinated with the client in order to provide a volume capacity sufficient enough to relieve the impact of annual flood events. The constructed wetland was further incorporated in to improve the water quality of the water runoff from the adjacent waterway connected to the community and urban area.



1. ลานจอดรถ
2. ศาลาพักผ่อนหย่อนกรรมพักผ่อน
3. ทางเดินศึกษาพันธุ์ไม้
4. สวนสมุนไพร 12 ราศี
5. อาคารรถกลางแจ้ง
6. พื้นที่ปลูกป่าบริเวณ
7. ลานกิจกรรมเหนือน้ำ
8. ทางเดินยกระดับเหนือน้ำ
9. บ่อน้ำค้ำน้ำด้วยพืช
10. Gabbion ข่ายกรองน้ำ
11. ฝ่ายน้ำสัน



**Lead Designer:** Touchapon Suntrajan  
**Landscape Architects:** Nottaporn Gatewattanatorn / Paponpat Chotipanpat  
**Client:** PTT Public Company Limited.  
**Contractor:** Green Thumb Co.,Ltd.  
**Photography Credit:** Rungkit Charoenwat / Touchapon Suntrajan

Honorable Award

# Medicinal Plants Garden : Suanluang Rama IX

Landscape Architects of Bangkok



In addition to the learning exhibit and medicinal plants, the design focuses on creating an environment that will leave a lasting impression of creativity while also allowing for visitors to relax as if they were in a public park where the pavilion shelter provides spaces for relaxation and a multi-purpose lawn to be used for various activities as well as a large rock out-cropping which is used for foot massages. Visitors to the Medicinal Plant Garden will receive a wealth of knowledge where the educational, leisure, recreational and health science aspects of the project allow for the Medicinal Plant Garden at Suan Luang to be different from your typical herb garden.

**Lead Designer:** Tawatchai Kobkaikit / Boontarika Wannapin  
**Landscape Architects:** Akachai Werasakulchai / Acamsiri Lormphongs / Panyada Ukampang / Punyada Klinpaka / Thannapat Tonnuea / Tingklub  
**Client:** Rama 9 Royal Park Foundation  
**Photography Credit:** Rungkit Charoenwat

*"This beautiful renovation of the medicinal garden harmonizes the contrast between modern design and the delicate nature of plant materials. It also interestingly facilitates an environment that enhances the learning experiences of the users of this public park."*

2016 Awards jury



The Medicinal Plant Garden is a part of the Suan Luang (Rama 9 Royal Park) Foundation renovation project to redesign the existing herb garden within the park. In dedication to Her Royal Highness (HRH) Princess Maha Chakri Sirindorn, and in celebration of her majesty's 60th Birthday on April 2, 2015, HRH Princess Sirindorn gave her support and blessing for the promotion and conservation of medicinal herbs in Thailand for the benefit of the people. The design upgrades and improvements of the Medicinal Plant Garden intended to provide a growing collection of Thailand's medicinal plants, a learning center for the medicinal herb education of students and those interested and a venue for various events to support the inherited knowledge and legacy of medicinal botany in Thailand.

The concept of the design aims to convey the meaning of common herbs being "medicine that is nature" and features some common garden plants that have medicinal properties. The pharmaceutical properties of the plants come from different elements of the species including the plant roots, stems, leaves, flowers and branches as well as herbs containing various minerals in natural form which are further blended into the planting scheme. The overall layout of the site realizes a large-scale representation of the different parts that compose a plant, whether it be the trunk, branches, or the leaves commonly used as medicine. The concept form was initially depicted as a trunk at the front of the entrance plaza adjacent to the main pavilion which then branches out into a network of footpaths leading to resting areas with seating. The Medicinal Plant Garden exhibits plant leaves of different sizes in the main multi-purpose pavilion, which are designed to support activities and serve as a facility or hermitage to disseminate the knowledge of herbs. It is formed from patterns of the leaf in order to help define the surrounding boundaries. The materials used to build the pavilion and adjacent spaces include wood, steel and gravel.

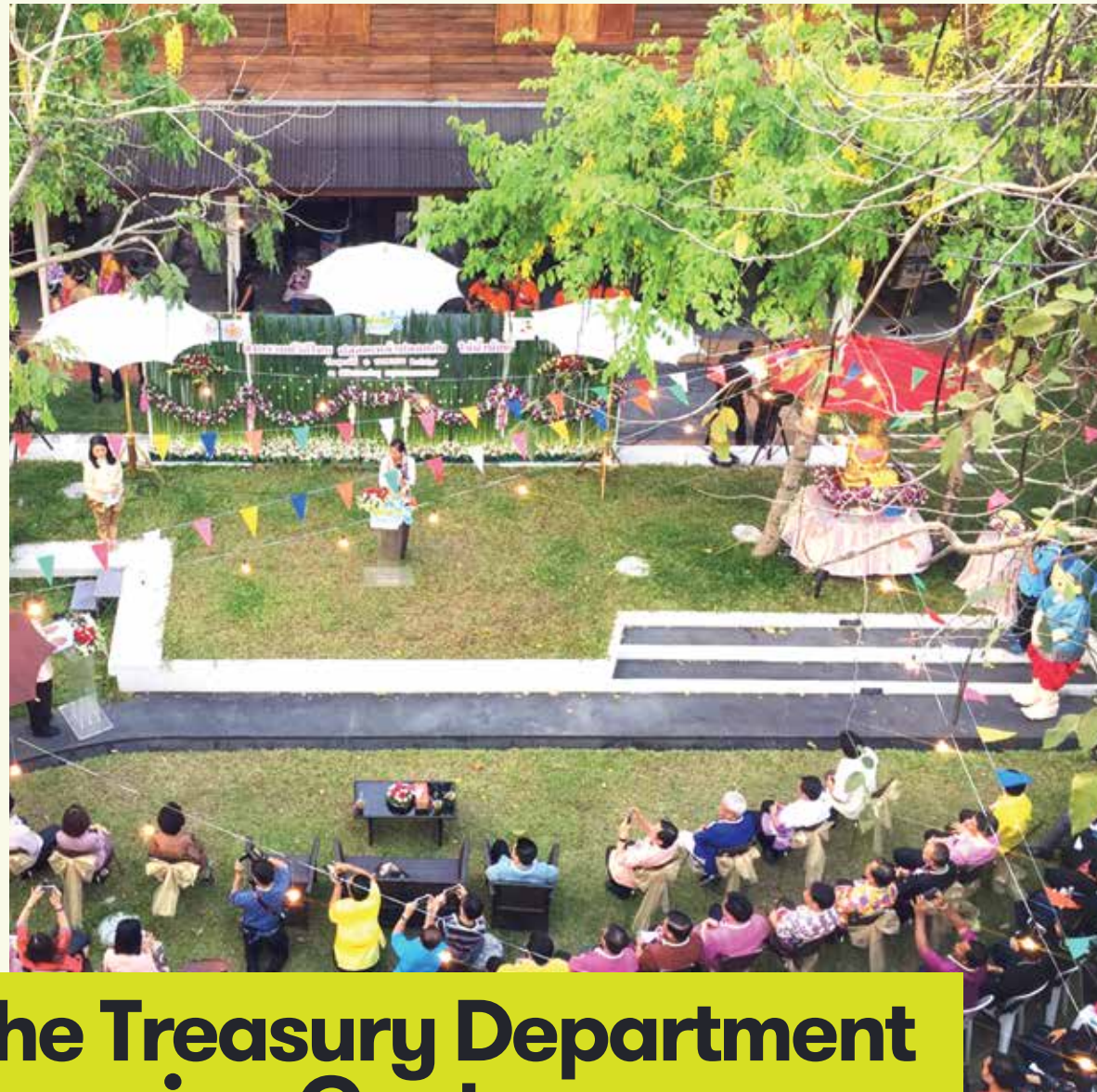
Location  
**Bangkok**  
Completion  
**2015**  
Area  
**12,800 Sq.m.**

## THE PLANNED DESIGN HIGHLIGHTS AND SHOWCASES THE PLANTS INTO 16 VARIOUS ZONES:

- 1) Medicinal Plant Beds
- 2) Indoor Shady Plants
- 3) Poisonous Plants
- 4) Antitoxins
- 5) Aromatic Plants
- 6) Antiemetics
- 7) Diuretics
- 8) Emmenagogues
- 9) Cough Suppressants
- 10) Fever-reducing Plants
- 11) Plants for Skin Disease
- 12) Tubers
- 13) Kitchen Herb Garden
- 14) Grasses
- 15) Climber Plants and
- 16) Aquatic Plants







# The Treasury Department Learning Center & Community Library (Pipit Banglumphu)

Studio Taila

Within this project, the landscape works include a community and recreation area featuring a main lawn that can be utilized in many kinds of activities and requirements, a meeting area where performances can be held on special occasions, a recreation / green area and an outdoor classroom.

Furthermore, the community stage aimed to respond to the requirements of the existing trees, keeping them at the same existing level. Therefore, the landscape architect created different levels to match the users' requirements which are a stage and a seating area for recreational activities.

Within the outdoor classroom, the location of the stage can be seen easily from the main entrance while there are also enough areas for a temporary back stage area allowing for the audience to be screened from the backdrop. Vehicles can also easily access the stage in order for equipment to be supplied as needed.

The project further features a main entrance area, a welcome / waiting area, a guard house and a space for emergency parking.

15 - 20 bike paths are incorporated throughout the premises as well as general walkways running along and between the existing buildings and connecting areas. In addition, the floor materials were created to match with the surrounding



*"This project realizes an interpreted history in the form of landscape architecture through the creation of a small space that brings together people and place, creating a great example of 'Place Making' and intervention for social interaction."*

2016 Awards jury

contexts and historic areas such as Pha Sumen Fort, the traces of the city wall and Santichai Prakan public park as means of facilitating emotional and visual continuation. The primary materials used were brick clay, as the medium functions as a compatible element creating connection between the area of the project and its surroundings. In terms of the plants, the landscape architect designed the project in a manner that allowed for all of the existing trees in the area to be kept while further supporting and creating more green areas. The project will bring about a large green area within the district of Bang Lamphu.

**Client:** Rightman Co.,Ltd.  
**Owner:** The Treasury Department, Ministry of Finance  
**Consultants:** Fine Arts Department / Bangkok Metropolitan Administration  
**Stakeholder:** Representatives of Banglumphu Community  
**Contractor:** Rightman Co.,Ltd.  
**Photography Credit:** Mattanyu Meksawat / Phitchanart Chumchea



Location  
**Bangkok**  
Completion  
**2014**  
Area  
**1,600 Sq.m.**

# Master Planning



Honorable Award



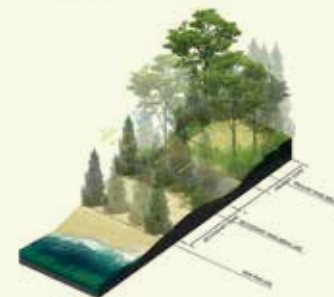
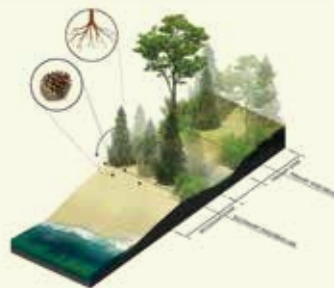
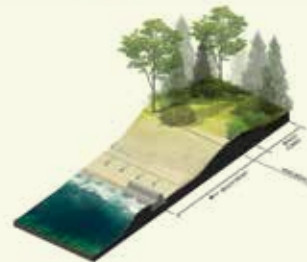
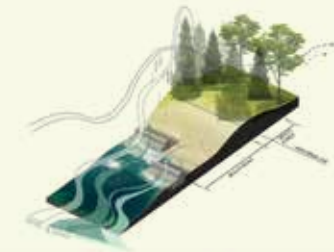
# Pak Phanang Wind Park

RAFA Design Office

Location  
**Nakorn Si Thammarat**  
Completion  
-  
Area  
**125.2 Rai**

*"The Local & Global issues are intertwined into one big picture, bringing a positive impact to Thai landscape architecture. The project also maintains an interesting*

*balance between the original shrimp farm area and recreational tourism as it integrates technical knowledge into landscape design."*  
2016 Awards jury



This project is an initiation to create the first "Wind Park" in Thailand. Situated in Amphur Pak Phanang, Nakhon Sri Thammarat province, Thailand, the area covers 184.5 rai consisting of 4 wind turbines with 125.2 rai utilized for the designed area. The main idea of the project is to create public spaces for local people within a limited budget and to also help to promote tourism in the province.

This project aims to be an example for landscape planning and design that gives great respect to and understanding of nature. It also explicates that solutions to successfully integrate the landscape with nature could be possible for designers with environmental concerns. Humans can actually take advantage of nature without destroying it, but at the same time should allow for ecological systems to survive and be able to restore themselves naturally.

From the survey, the area was originally home to shrimp farms and has been confronting severe coastal erosions for decades. Therefore, one of the main tasks is to find methods to decrease as well as prevent indicated problems. Furthermore, acceptance by the local people and administrations was also a concern for the owner due to the long-term development and public's involvement in the project.

Being involved in the project from the beginning resulted in the designer's inspiration to preserve the unique characteristics of the area. Hence, strong efforts were made to refrain from disturbing several ponds and existing trees while constructing the wind turbines and its infrastructures. Such an impression of the site became the design concept, to create an ecological park which used primarily natural conditions as a resource for future development - all ponds were kept intact while the pine trees were untouched, allowing for them to grow naturally. Additionally, local and public activities including detail designs (color, shape and plant selections) were carefully selected as to be harmonized in with the natural conditions which are the sand beach and pine forests.

The master plan was divided into three phases. The first phase (1-5 yrs) focused mainly on the natural restoration processes including reconnecting water systems (destroyed after road construction) and creating break water from a large pile of rocks to reduce the loss of sand. The second phase (5-10 yrs) aimed at building facilities through natural and temporary features such as walkways, a sand plaza, natural trails and temporary structures for community activities. The last phase will occur after the natural systems are fully recovered (approx. 10-20 yrs) - and will feature tourist attractions including a community center, tourist pier, amphitheater and resort.

**Lead Designer:** Lertlit Nithichaiyo  
**Landscape Architects:** Ratchu Surajaras / Rapa Surajaras  
**Architect:** Vaslab Co.,Ltd  
**Consultant:** Assistant Professor. Dr. Angsana Boonyopas  
**Client:** Inter Far East Wind International Co.,Ltd.



Honorable Award



# Royal Flora Ratchaphurk, World Horticulture Exposition 2006

Thanapon Jetwaranyu



The Royal Flora Ratchaphurk 2006 in Chiangmai, known as the World Horticulture Exposition for His Majesty the King Bhumipol Adulyadej of Thailand, was hosted by Thai people in celebration of the 60th Anniversary of His Majesty's accession to the throne and His 80th birthday anniversary. This project was officially approved by AIPH and was the first time that BIE held a long-term exhibition in South East Asia under the category of A1. The theme of the exposition was "To Express the Love for Humanity."

**Lead Designer:** Professor Rangsit Suwanketnikom, Phd. / Kasetsart University Research and Development Institute Hor Kum Luang (The Center Piece Architecture)  
**Designer:** Roong Chantaboon  
**Project Engineer:** INDEX  
**Construction Manager:** Faculty of Engineering, Kasetsart University  
**Project Manager & Exhibition Management:** Reed Tradex  
**Client:** Department of Agriculture  
**Contractor:** CKNNL  
**Photography Credit:** Thanapon Jetwaranyu



Location  
 Chiang Mai  
 Completion  
 2006  
 Area  
 460 Rai

"The axis of the Royal Pavilion functions as a strong structure in the master plan, and therefore offers great flexibility for post-use design thinking and the use of other spaces. The surrounding environment and visual connection with the outside context are brought in to create a highly unique image within the project."  
 2016 Awards jury

Master Planning

The background is a dark charcoal grey. It is decorated with several bright yellow geometric shapes: a small square in the top left, a horizontal rectangle below it, a larger square in the center, a horizontal rectangle to the right of the center square, a vertical rectangle in the bottom left, a horizontal rectangle in the bottom center, a large square in the bottom right, and a horizontal rectangle in the top right.

# Landscapae Art / Exhibition

Excellent Award

# The Metro-Forest Project

Landscape Architects of Bangkok



Located at the Eastern fringes of Bangkok in the suburban district of Prawet, approximately six kilometers from the Suvarnabhumi International Airport, lies the PTT Metro Forest, an ecological regeneration project designed as an outdoor exhibition space to cultivate environmental awareness and educate visitors about local forest ecology. The project, on an abandoned site, aimed to reclaim 2-hectares (4.75 acres) of valuable land and reverse the trends of suburban sprawl, urban heat islands, and flood-prone developments through the incorporation of historically local (native and introduced) lowland tropical tree species.

**Landscape Architect of Record:** Nantawan Sirisup / Akachai Weerasakulchai / Punyada Klinpaka / Tiprada Tingklub / Thannaphat Tonnuea

**Ecological Forest Consultant:** Dr. Sirin Kaewlaierd  
**Landscape Design Consultant:** Assistant Professor Dr. Angsana Boonyobhas

**Architectural Design & Interior Design:** Spacetime Architects Co.,Ltd

**Interior Design of Mini-Theatre area:** designLAB NLSS Co.,Ltd

**Energy & Green Building Consultant:** Architects 49 Limited

**Exhibition Design:** Pico (Thailand) Public Co.,Ltd

**Lighting Consultant:** 49 Lighting Design Consultants Limited

**Structural Engineering:** H. Engineer Co.,Ltd

**MEP Engineering:** MITR Technical Consultant Co.,Ltd

**Quantity Surveyor:** Langdon & Seah Thailand Ltd.

**Construction Management:** EDA Consultant Co.,Ltd

**Main Contractor:** Ritta Co.,Ltd

**Softscape Contractor:** Cordia Co.,Ltd

**Waterfall Contractor:** Tropical Garden Limited Partnership

**Rammed Earth Sub-contractor:** La Terre Co.,Ltd

**Earthwork Contractor:** Psatanachod Kanyotha Co.,Ltd

**Client:** PTT Public Company Limited

**Prime Contractor:** Cordia Co.,Ltd.

**Photography Credit:** Rungkit Charoenwat



Location  
**Bangkok**  
Completion  
**2015**  
Area  
**19,485 Sq.m.**



*"The project proposes a new concept where knowledge related to forests and re-forestation is presented through a very creative and interesting exhibition. It creates a new perspective and understanding towards the forest and the city while cultivating people's awareness of forest preservation."*

*2016 Awards jury*





Honorable Award & Conservation Award (Heritage Creativity)



# Khao Mo (Mythical Escapism)

Sanitas Studio



Location  
**Bangkok**  
Completion  
**2013**  
Area  
**W6.88 x L7.12  
x H3.20 Metres**

After the exhibition at the Bangkok Art and Culture Centre ended, "Khao Mo (Mythical Escapism)" was exhibited one more time in a different context. The exhibition was moved from inside the building to outside—set amongst the natural ambience of lush green trees in Park@Siam on the grounds of Chulalongkorn University. Thus the "Khao Mo" has returned to nature once again.

Park@Siam was opened as a public park in 2010. It is a green area that links Siam Square and the academic area of Chulalongkorn University. In 2014, the "Khao Mo (Mythical Escapism)" was moved to Park@Siam and it has become a part of Siam Square since then. It is a meeting place for people of the new generation and a colorful area in Bangkok.

Park@Siam is a connecting area between urban modernity and an academic institution, with the Khao Mo symbolically serving as the gateway to an area that connects a public urban space and the academic area of Chulalongkorn University. The location of the "Khao Mo (Mythical Escapism)" is among trees that have been in the park since the olden days. The exhibit helps to reflect the beauty of the surrounding plants; while at the same time, these plants can make the Khao Mo more interesting because they add a natural dimension to the exhibit, making the area lively and investing it with new meaning. The Khao Mo and the trees encourage people to be aware of the importance of conserving those old trees.

The Khao Mo of the past, which was created from the arrangement of rocks and trees, has been replaced by the new "Khao Mo (Mythical Escapism)" which simply uses the reflected image of the natural greenery to cover its surface. The physical condition of the "Khao Mo (Mythical Escapism)" has been reduced to pieces of stained glass that reflect the surroundings. At the same time, they also enable people to see the gradual change in surrounding nature, from dawn until dusk, from the hot season to the rainy season and eventually to the cool season. The physical existence and the non-physical existence of the "Khao Mo (Mythical Escapism)" have opened a space where people are able to stop, think and observe the changes around them.

**Lead Designer:** Sanitas Pradittasnee  
**Landscape Architect of Record:** Krongkan Arkaraeaktalin / Kantarat Aroonrer / Nattanit Eksangkul / Supavadee Nimawan  
**Photography credit:** Wison Tunghanya  
**Other Consultants & Stakeholders:** Bangkok Art and Culture Center / Chulalongkorn University / Kijrungruang Steel Limited Partnership

*"This project develops the significance of the landscape of traditional Thai gardens through the interpretation of Khao Mo in a contemporary context and the use of space to reflect the environment and facilitate interactions between people, Khao Mo and the usage of space."*

2016 Awards jury



Honorable Award

# Flower in Twilight

Thanapon Jetwaranyu

Many flower species change and alter not only throughout seasons, but also the span of day and night. This project focuses on those daily changes that occur within the natural cycle of plant species.

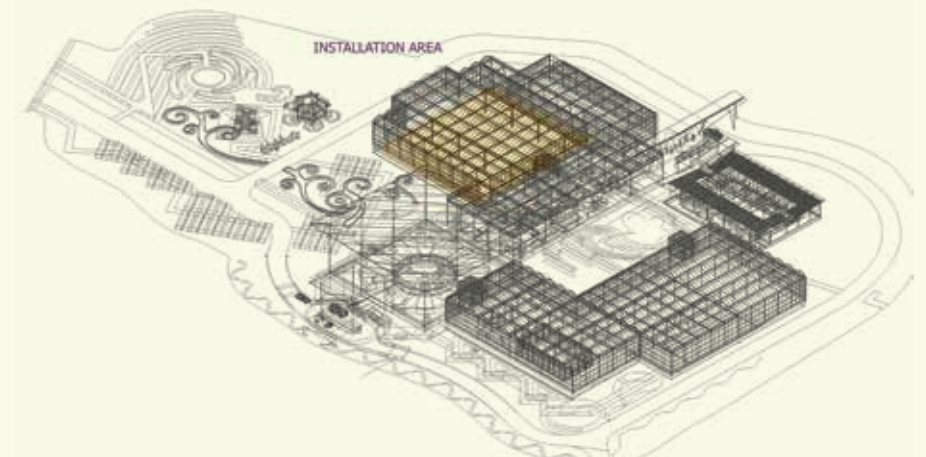
**Lighting Consultant:** VWK  
**Client:** D.S.D lifestyle Motive  
**Photography Credit:** Thanapon Jetwaranyu

Location  
**Prachinburi**  
Completion  
**2015**  
Area  
**900 Sq.m.**



*"This project presents an upside-down way of looking at plants and flowers, interesting display of lighting and animation that brings viewers into the fantasy, almost surreal, world of these ordinary landscape elements."*

2016 Awards jury



Honorable Award

# Pink Path

Thanapon Jetwaranyu

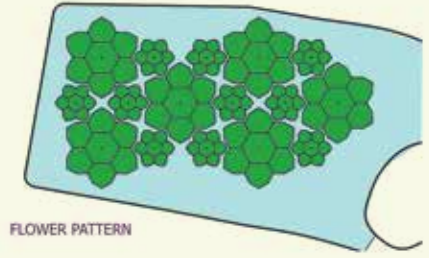
Creating simulated wetlands is equally important as maintaining the natural resources which we have and is therefore the focus of this project.

Client: D.S.D lifestyle Motive  
Photography Credit: Thanapon Jetwaranyu

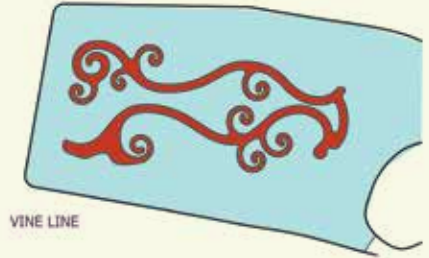
*"This seemingly unstable, bright pink path inspired by natural wetlands and meandering through the floating garden leaves people with different experiences and feelings towards the landscape, just like a good piece of art would."*  
2016 Awards jury



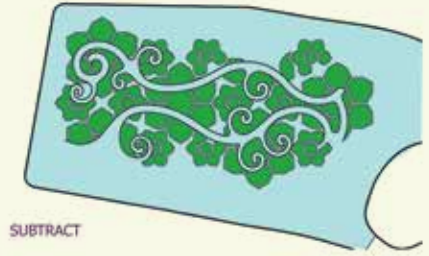
Location  
Prachinburi  
Completion  
2015  
Area  
4 Rai



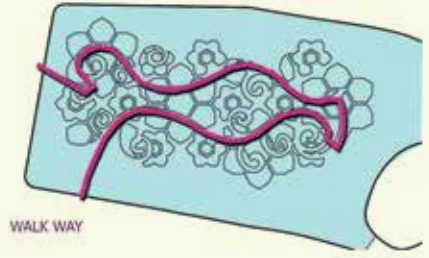
FLOWER PATTERN



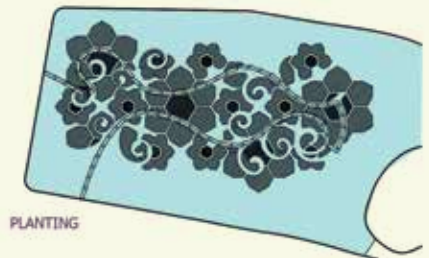
VINE LINE



SUBTRACT



WALK WAY



PLANTING

An abstract graphic design featuring a dark grey background with several bright yellow geometric shapes. These shapes include squares and rectangles of various sizes, scattered across the page. Some are solid, while others are thin lines. The overall composition is minimalist and modern.

# Community Service / Workshop

**KRUNGSRI  
INMAX**

Excellent Award

# Siam Green Sky : Urban Agricultural Learning Center

Landprocess





Siam Green Sky is a brand new landmark built at the top (7th floor) of the Siam Square One shopping center. As the largest urban rooftop garden in Thailand, the Siam Green Sky will function as a learning center for agricultural innovations and horticulture as well as a source of crops, fruits, and flowers for tourists, students and visitors.

Location  
**Bangkok**  
 Completion  
**2014**  
 Area  
**1.16 Rai**

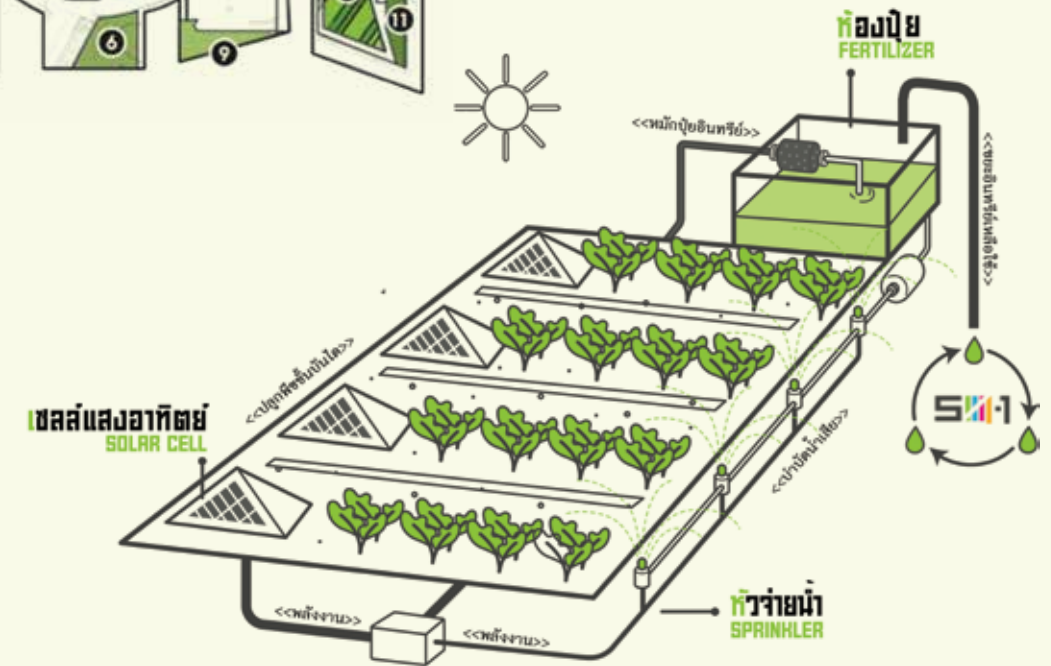
The concept of the layout divides the space into three parts consisting of an innovative farming plot, multifarious plants plot and garden plants plot. The innovative farming plot is the largest section where the innovative cultivation with a solar system will be exhibited. Visitors will have a chance to observe the process of making organic fertilizer from stored waste, the cultivation of plants suitable for the area and the plantations of beautiful flowers, edible plants, herbs and rice. The second part or the multifarious plants plot will feature various types of plants displayed in the different sections such as the international plant section and decorative edible plants which visitors can use as a guide to grow their own vegetables and edible plants. The third part is the pretty and easy to grow plants which will cover plant species that are viable without the need for extra maintenance. In addition, outdoor works of art will be installed around the area, changing the surface of the ventilation pipes into canvases for paintings by famous street artists.

**Client:** Property Management Office  
 Chulalongkorn University  
**Prime Contractor (if applicable):**  
 Powerline Engineering Public Company Limited  
**Photography credit (if applicable):**  
 Kantharika Saetang  
**Plant Materials Consultants:** Assist. Prof. Dr.  
 Kanogwan Seraypheap / Assist. Prof. Dr. Jittra  
 Piapukiew / Supawan Visetnoi  
**Energy Saving Consultants:** Yutakarn Makpan  
**Landscape Maintenance Consultant:**  
 Shukiat Koman





"An example of a collaborative process between a designer and an owner that took place from the early stage of the briefing to the actual organization of activities in the area. The result is a creative space in the form of a roof garden in the center of Bangkok that proposes itself as an alternative ground for urban dwellers to participate in activities, interact with each other as well as be inspired to learn more about urban agriculture."  
2016 Awards jury



Honorable Award



# Co-Crete Charoenkrung

Shma Soen



Location  
**Bangkok**  
Completion  
**2016**  
Area  
**450,000 Sq.m.**

CO-CREATE CHAROENKRUNG's purpose is to foster the concept of an inclusive creative district development by working together with local stakeholders through a design-based thinking process. The project seeks to implement a greatly evaluated design with public engagement expertise through participatory processes, finishing with a 1:1 scale prototype. The main design concept can be divided into two points. Firstly, the inclusive masterplanning process that takes into account community feedback in order to increase quality and engagement in our design. We acknowledge that incremental changes in creative development that respond to local stakeholders will lead to long-term improvements for Charoenkrung. We assessed three typologies (S M L) and three design frameworks in order to transform Charoenkrung into a creative district. These three frameworks are as follows: Revival: to regenerate forgotten urban spaces and vacant historical sites back into use; Relink: to create a network between the public and the environment in order to foster more interactions between local residents and their district and lastly, Rebrand: to create a newfound awareness for the district in order to keep the general public well informed and updated about their district and its surroundings.

*"The design process within this project is determined by community participation as the program was created to serve the demands of locals while also promoting the neighborhood's original identity. It proposes an idea about the regeneration of the riverside public space with great consideration being placed on the city and neighborhoods' networks for the true benefit of the public."*

2016 Awards jury

**Lead Designer:** Yossapon Boonsom & Prapan Napawongdee

**Landscape Architect of Record:** Kirin Tanglertpanya  
**Client / Owner:** Thailand Creative & Design Center (TCDC), Thai Health Promotion Foundation, Office of the Prime Minister and The Office of Knowledge Management and Development (OKMD)

**Co-design Process:** Thammasat University

**Contractor:** Shop Idea Co.,Ltd. / M.J. Gardens Co.,Ltd.





# Conservation Award

## Heritage Conservation



Location  
**Lampang**  
Completion  
**2013**  
Area  
**13,548 Sq.m.**

*"The project evidently meets the best practice for its design process, as a cultural heritage conservation which comprises historical and (always forgotten) archaeological study. The community-based interpretation and presentation of the significances of site through the design is also worth to be mentioned."*

2016 Awards jury

## Museum Lampang XSiTE Design Studio

Museum Lampang is located at the main circulation of Lampang city, in the old government center where connects to Kad Kong Ta (Old river front market) and new municipality market. According to the history and context it was found that site potential is also the city square. Therefore, the circulation and visual connection linking community to museum were designed to harmonize museum with its surroundings. On the one hand the design aims to be green area, as a "museum square" or Khoung Museum in Thai so as to promote architectural aesthetic, to create pleasant shady area and also to be the outdoor museum. On the other hand as a "city square" or Khoung Meuang, it is a multi-purposed plaza demonstrating its history, local intellectual, custom and tradition, beliefs and way of life which is a pride of Lampang citizen through each landscape architectural elements including the archaeological pit showing the remains of Hor Kham Luang - an administrative building of the Lord of the North (Lanna Kingdom).

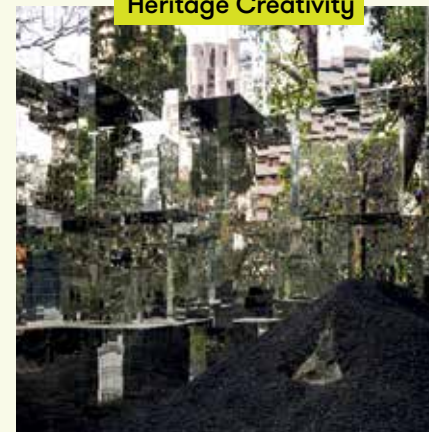
The museum is set up by a collaboration of National Discovery Museum Institute - NDMI, Lampang province, Lampang city municipality and Lampang citizen network. This learning

museum is housed in the restored the old provincial hall under supervision of a committee comprising various groups of people from both government and private sectors and worked under "Lampang citizen participation" policy. In consequences the project provided Lampang citizen a chance to create the museum concept, content and presentation method on their own while on-site activities were also held to gather knowledge and requirements from local people which formed the story and content of this museum. Then main concept "Truly Lampang" agreed by all stakeholders was created.

The Landscape design for main outdoor exhibition that reflects the museum objective, main project concept and indoor exhibition was proposed by a voluntary Lampang-born landscape architect and was accepted by all stakeholders. Respectively the complicated context of the site, its multi-layering history, community and the city were taken to consideration for the design in order to deliver the learnable and understandable message to general public.

**Landscape Architect:** Thotthanet Luekijna  
**Client:** Lumpang City Municipality

## Heritage Creativity



## Khao Mo (Mythical Escapism) Sanitas Studio

Location  
**Bangkok**  
Completion  
**2013**  
Area  
**W6.88 x L7.12  
x H3.20 Metres**

*"The concept of "Khao Mo", one of the important elements found in several old landscape design, tangibly and intangibly, was reinterpreted, then*

*applied to a new landscape design for a present-day lifestyle."*

2016 Awards jury  
\*More detail at pages 118-119

# Additional Entries

## Finalists

### Private Residence



**CU Residence**  
RAFA Design Office



**Phupiman Residence**  
Landscape Architects of Bangkok



**PRINN Sathorn-Ratchaphruek**  
Axis Landscape

## Residential Complex : High-Rise



**The Base Central Pattaya**  
Redland-Scape



**Zire Wongamat**  
Shma

## Residential Complex : Low-Rise



**D condo Mine Phuket**  
Redland-Scape



**D condo Creek Phuket**  
Redland-Scape

## Commercial



**Central Festival Pattaya Beach**  
Axis Landscape



**Central Festival Eastville**  
Landscape Architects of Bangkok.



**Central Festival Chiangmai**  
Shma



**Royal Cliff Hotels Group**  
Landscape Architects of Bangkok

## Public Space

**Wat Phai Dam**  
Shma



## Hospitality

**Cape Nidhra**  
Shma



## Master Planning



**Landscape Masterplan for University of Phayao**  
Landscape Architects of Bangkok



**Black Mountain Water Park**  
RAFA Design Office



**Coco Port  
Nathorn**  
Landscape  
Architects  
of Bangkok

**Landscape  
Art/Exhibition**



**Light Up**  
Thanapon Jetwaranyu

**Community Service/Workshop**

**Bangkok  
Sabai  
Walk**  
Axis  
Landscape



**Museum Lampung**  
XSiTE Design Studio

**Chinese Cultural Center**  
XSiTE Design Studio



**Dasada  
Flowerism  
Park  
Master  
Plan**  
Thanapon  
Jetwaranyu



# Additional Entries

## Private Residence



### Nakasiri Residence

Planning Workplace



### K. Residence

lokoh=

## Residential Complex : Low-Rise



### Las Tortugas by Sansiri

RAFA Design Office



### Setthasiri-Chaengwattana-Prachachuen

Ixora Design



### Elio Del ray

Redland-Scape



### The Base Downtown Phuket

Openbox Architects



### Setthasiri Chaiyaphruek-Chaengwattana

Landscape Architects of Bangkok



### Garden of Happiness Baan Sansuk

TROP : terrains + open space



### D condo Sign Chiangmai

iXora Design



### Private Nirvana Residence (East/North)

lokoh=

## Residential Complex : High-Rise



### HQ Thonglor

Landscape Architects of Bangkok



### The Key Sathorn Ratchapreuk

XSITE Design Studio

## Commercial



### Central Plaza Rayong

ON GROUND



**Think Park**  
Shma



**Dasada Flower Gallery**  
Thanapon Jetwaranyu

## Hospitality



**Hotel Indigo Bangkok**  
Landscape Architects 49



**Cape Dara Resort Pattaya**  
Planning Workplace



**Siam Niramit Phuket**  
Iokoh=

## Institution



**Early Learning Centre  
Family of International  
Schools - Phase3**  
Landscape Tectonix

## Public Space



**Lankila Pat 1**  
Shma Soen

## Master Planning



**Nongkheurn forest park**  
1819



**Makkasan Creative Park**  
Shma



**Chao Praya River Vision  
for the Future**  
Friends of the River

## Landscape Art / Exhibition



**Lighting Tunnel**  
Thanapon Jetwaranyu



**Bamboo Tunnel**  
Thanapon Jetwaranyu



**Field of Dream**  
Thanapon Jetwaranyu

## Community / Workshop



**Buddhamonthon Trat**  
Planning Workplace

# TALA Workshop



**Pigeon : The Airborne Invasion of Bangkok**  
Acamsiri Lormphongs  
Group: Chon Supawongse



**complex(city)**  
Sukthacha Songsombut  
Group: Chon Supawongse



**Plant on railway**  
PLAND



**KFC Biker**  
Prapassara Phupinyokul  
Group: Chon Supawongse



**The Series**  
Sutida Wongtiamchai  
Group: Chon Supawongse



**Footpath Re-Creation**  
Shma



**Vancancy Railway Succession**  
Nat Woradanarit  
Group: Chon Supawongse



**Rewire**  
Wish Vitayathanagorn  
Group: Chon Supawongse



**Mountain tower**  
TROP



**SUR-WILD LAB**

# ทุกรางวัล คือ... ความภูมิใจของคนไทยทุกคน



## 6<sup>th</sup> ASIAN EXCELLENCE AWARD 2016

รางวัลอันทรงคุณค่า สะท้อนความเป็นเลิศในการดำเนินธุรกิจ ให้ความสำคัญกับการกำกับดูแลกิจการที่ดี ควบคู่ดูแลผู้มีส่วนได้ส่วนเสียอย่างสมดุล กลุ่ม ปตท. ขอมุ่งมั่นในการกิจบริหารจัดการพลังงานอย่างมีประสิทธิภาพ และพร้อมเป็นอีกพลังขับเคลื่อนประเทศไทยให้เติบโตอย่างยั่งยืน นำความภาคภูมิใจสู่ประเทศและคนไทยทุกคน

### รางวัลผู้นำองค์กรยอดเยี่ยม ในเอเชียแห่งปี

- ปตท. เทวินทร์ วงศ์วานิช
- พีทีที โกลบอล เคมิคอล สุพัฒนพงษ์ พันธุ์มีชาวั
- ไออาร์พีซี สุกฤตย์ สุรภทโสภณ

### รางวัลผู้บริหารการเงินองค์กรยอดเยี่ยมในเอเชียแห่งปี

- ปตท. วิรัตน์ เอื้อนฤมิตร
- ปตท. สผ. พรรณนลิน มหาวงศ์ธิกุล

### รางวัลชื่อเสียงองค์กรยอดเยี่ยม

- ปตท.
- พีทีที โกลบอล เคมิคอล
- ไทยออยล์

### รางวัลนักลงทุนสัมพันธ์ยอดเยี่ยม

- ปตท. • ปตท.สผ.
- พีทีที โกลบอล เคมิคอล
- ไออาร์พีซี • ไทยออยล์

### รางวัลผู้บริหารฝ่ายลงทุนสัมพันธ์ยอดเยี่ยม

- ปตท. พิจินต์ อภิวันทนาพร

### รางวัลความรับผิดชอบต่อสิ่งแวดล้อมยอดเยี่ยม

- ปตท.สผ.
- พีทีที โกลบอล เคมิคอล

### รางวัลสื่อสารองค์กรยอดเยี่ยม

- ปตท.





## 2016 TALA PROFESSIONAL AWARDS

### EXECUTIVE DIRECTOR

#### President

Vipakorn Thumwimol, Ph.D.

#### Vice President

Pongsak Laomanacharoen  
Pranisa Boonkham  
Namchai Saensupha  
Chirayu Twipaopakin

#### Committeeman

Ronarit Dhanakoses  
Nopporn Roysirikul  
Sajjapongs Lekuthai  
Chaichoompol Vathakanon

#### Receptionist

Somprach Likitluecha

#### Public Relations

Hatthaya Siriphatthanakun

#### Registrar

Saengthan Nisapa

#### Treasurer

Chutima Surachetthapong

#### Secretary-General

Chanipat Chavananont

### COMMITTEE TALA NIGHT 2016

#### Chairman

Chairatana Surajaras

#### Advisor

Munggorn Chaijaroenmaitre

#### Subcommittee

Pongsak Laomanacharoen  
Sanitas Pradittasnee  
Namchai Saensupha  
Chanipat Chavananont  
Pranisa Boonkham  
Somprach Likitluecha  
Chirayu Twipaopakin  
Chaichoompol Vathakanon

### CONTEST ORGANIZER 2016 TALA PROFESSIONAL AWARDS

#### Advisor

Professor Emeritus Decha Boonkham  
Associate Professor Chamree  
Arayanimutskul

#### Chairperson

Pranisa Boonkham

#### Assistant Professor / Committee Member

Panitat Ratanawichit

#### Assistant Professor / Committee Member

Sirintra Vanno

#### Committee Member

Somprach Likitluecha  
Chutima Surachetthapong  
Hatthaya Siriphatthanakun  
Pawin Sirisali  
Putdan Chantarangkul

### TALA WORKSHOP : EMERGENT BANGKOK

Touchapon Suntrajarn  
Chon Supawongse  
Krittaya Ngamkamollert

#### Co Ordinators

Samonwan Worrakarn  
- Maejo University  
Mathinee Khotdee  
- Mahasarakham University  
Umpa Buarapa  
- Mahasarakham University  
Assistant Professor Panitat Ratanawichit  
- Kasetsart University  
Instructor Supanut Dejnirattisai  
- Thammasat University  
Instructor Fa Likitswat  
- Thammasat University  
Assistant Professor Sirintra Vanno  
- Chulalongkorn University

#### Landscape Architect Offices

Shma  
Landscape Architects of Bangkok  
PLandscape  
Trop

### 2016 TALA PROFESSIONAL AWARDS EXHIBITION

Nitiwat Leadvimolkasem  
Napapol Sukprasert

#### Editors

Ponlawat Pootai  
Gullyawat Lertpeerakorn  
Kasidis Vajranate

#### Assistant

Supeerate Preungvate  
Sumonpan Kong-u-thaikul  
Wana Thunthawa

#### Co Ordinators

Phitchaya Khuantip  
Taddao Sutaket

### ORGANIZER

#### Graphic

Kamolthip Kimaree  
Wasawat Dechapirom

#### Advertising

Areewan Suwanmanee  
Paveena Trikomol  
Jetarin Puttharakas

© 2016 Thai Association of Landscape Architects & Corporation 4d

Further details are available on  
[www.tala.or.th](http://www.tala.or.th)

All rights reserved. No part of this publication may be reproduced or transmitted in any form or by any means, electronic or mechanical, including photocopy or any storage and retrieval system, without written permission from the publisher.

Printed in Thailand







Living Urbanism.

